

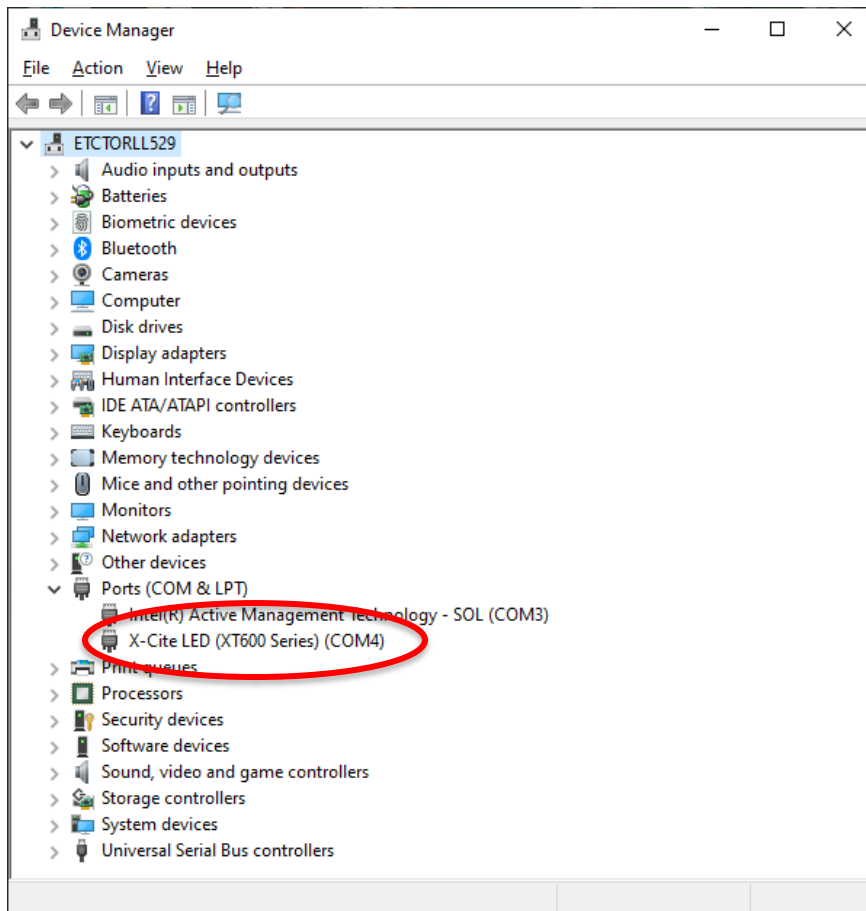


## **X-Cite® NOVEM Field Update Instructions**

These instructions will guide you through the process of updating the firmware and settings of an X-Cite NOVEM unit via a computer and USB cable. Please note: there are two separate update programs to run.

### **Connect**

1. Connect the X-Cite unit to your PC with the supplied USB cable.
2. Turn on the X-Cite unit.
3. Let the driver install from Windows update, or download and install from:  
<https://www.excelitas.com/product/x-cite-novem-powerful-9-channel-led-illumination-system>
4. After the driver has installed, verify the connection in Device Manager.



### **Obtain the Field Update Files**

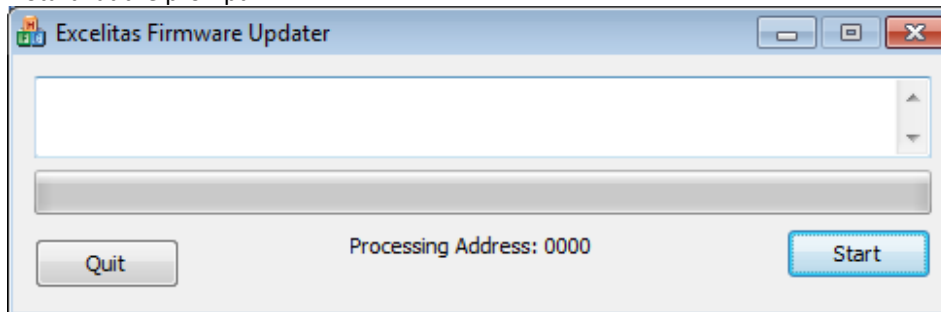
5. Obtain the files from website, Tech Support or Product Management.
6. If the update zip file ends with .zi\_, save to your computer and rename .zip



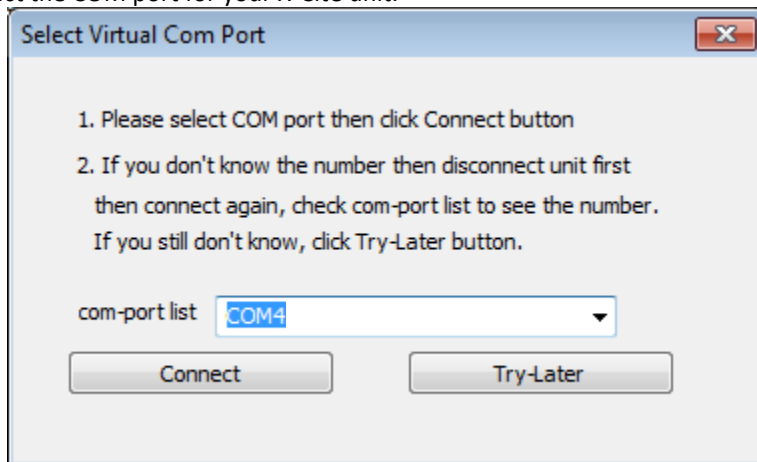
7. Extract the contents of the zip file into a folder on your computer. There will be two subfolders – **Firmware Update** and **Novem-Fix**

#### **UPDATE #1: Update the Firmware to v1.0.6**

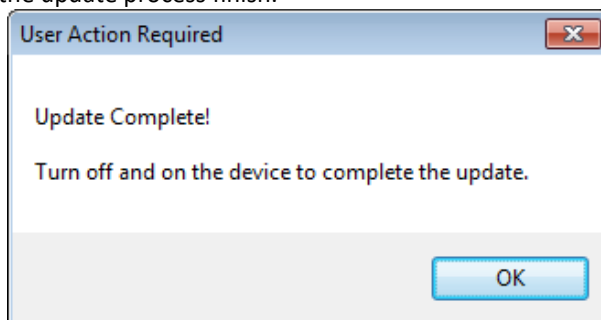
8. Run ExcelitasUpdate executable from the **Firmware Update** folder created above.
9. Click “Start” at the prompt.



10. Select the COM port for your X-Cite unit.



11. Click on Connect.
12. Let the update process finish.





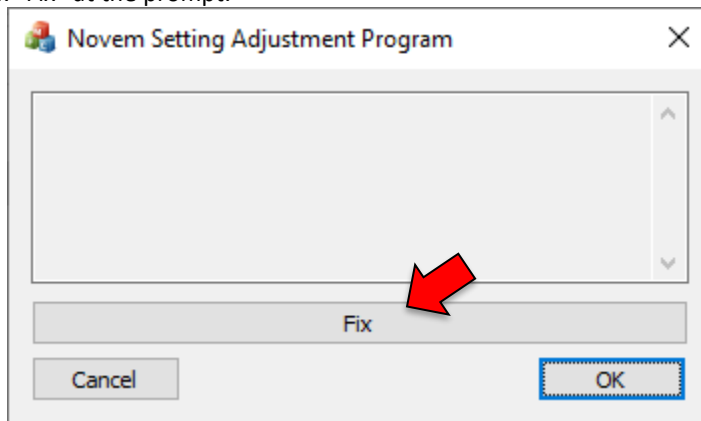
### Completion of Firmware Update

13. Power off and on the X-Cite unit.
14. The unit firmware is updated and ready for use.
15. To verify firmware version in the speedDIAL “Service Menu”: Press and hold the dial, select “Srvc” and then “S/W1”.

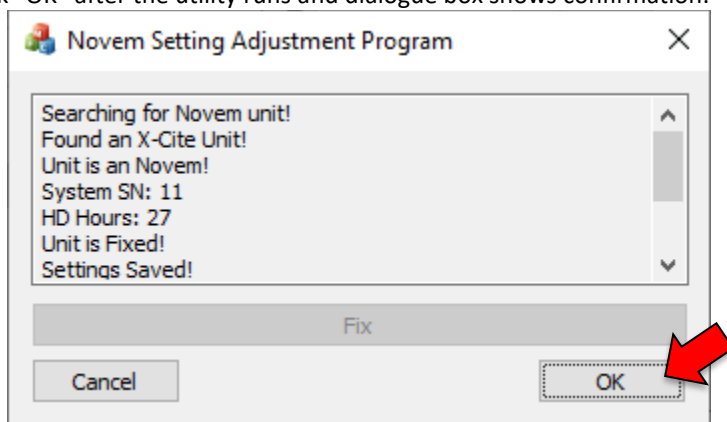
### UPDATE #2: Run the Setting Adjustment Utility

**(For units manufactured prior to June 2022. If you are unsure, run it.)**

16. Run “Novem-Fix.exe” from the **Novem-Fix** folder created above.
17. Click “Fix” at the prompt.



18. Click “OK” after the utility runs and dialogue box shows confirmation.



19. X-Cite NOVEM is now updated with the new settings.



## Trouble Shooting

1. X-Cite unit is turned off during the update.
  - a. Turn the X-Cite unit back on.
  - b. Run the ExcelitasUpdate executable in the folder above again.
  - c. Click start, the update program will recognize that the unit is in the firmware update process.
  - d. Let the process complete.
  - e. Go to step 13.
2. The Update Process failed.
  - a. Turn the X-Cite unit off.
  - b. Wait 10 seconds.
  - c. Turn the X-Cite unit on.
  - d. Run the ExcelitasUpdate executable in the folder above again.
  - e. Click start, the update program will recognize that the unit is in the firmware update process.
  - f. Let the process complete, if successful, go to step 13. If it fails again, contact Tech Support.
3. The ExcelitasUpdate program does nothing after clicking "Connect".
  - a. Some Windows computers take up to 10 minutes to install the generic driver, wait at least 10 minutes for it to proceed.

## Contact Information

Excelitas Technologies  
2260 Argentia Road  
Mississauga ON  
L5N6H7 CANADA

Technical Support: [techsupport@excelitas.com](mailto:techsupport@excelitas.com)  
General: [x-cite@excelitas.com](mailto:x-cite@excelitas.com)  
[www.excelitas.com](http://www.excelitas.com)